

# Notations Beispiel für Rhythmus Gitarre

I

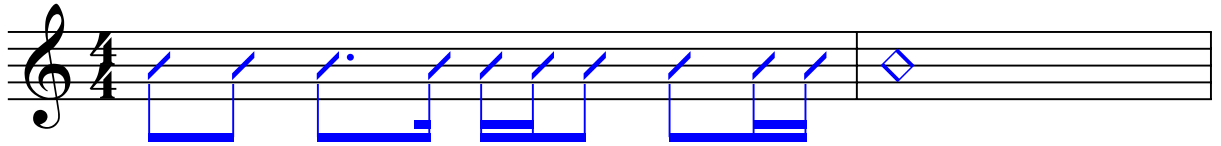
Am

C

D7

Am7

Gitarre



II

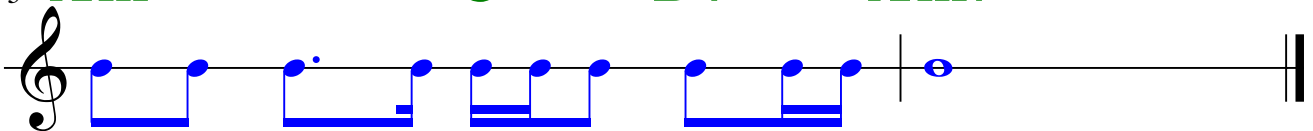
<sup>3</sup> Am

C

D7

Am7

Git.



# Notations Beispiel für Gesang

Sopran

Die Ge dan ken si nd frei

A A

Detailed description: The image shows a musical score for Soprano voice. The notation is on a single staff with a treble clef, a key signature of two sharps (F# and C#), and a 3/4 time signature. The melody is written in blue ink. The lyrics 'Die Gedanken sind frei' are written below the staff, with each syllable aligned with its corresponding note. Above the staff, two green capital letters 'A' are placed, one above the note for 'dan' and one above the note for 'nd'. The notes are: 'Die' (quarter), 'Ge' (quarter), 'dan' (quarter), 'ken' (quarter), 'si' (quarter), 'nd' (quarter), and 'frei' (quarter).

# Notations Beispiel für klassische Gitarre

Gitarre

Gitarre

T  
A  
B

3 0 0 3 1 0  
0 0 0 2 2 0  
2 3 0 4

Detailed description: The image shows two staves of music for guitar. The top staff is a treble clef with a key signature of one sharp (F#) and a 4/4 time signature. It contains a melody in blue and a bass line in green. The melody consists of quarter notes: F#4, G4, A4, B4, C5, and a final chord of G4 and B4. The bass line consists of quarter notes: F#3, G3, A3, B3, and a final chord of G3 and B3. The bottom staff is a guitar tablature with three lines labeled T (Treble), A (Middle), and B (Bass). It shows the fret numbers for the strings: T (3, 0, 0, 3, 1, 0), A (0, 0, 0, 2, 2, 0), and B (2, 3, 0, 4). The tablature is color-coded to match the notes in the staff above: blue for the melody and green for the bass line.

# Notations Beispiel für Bass

E-Bass

Bass

T  
A  
B

5 5<sup>•</sup> 7 4 7 4 7 5

The image shows two staves of music. The top staff is labeled 'E-Bass' and features a bass clef, a key signature of two sharps (F# and C#), and a 4/4 time signature. The melody consists of a half note G2, a dotted quarter note A2, an eighth note B2, a quarter note C3, a quarter note D3, a quarter note E3, a quarter note F3, and a whole note G3. The bottom staff is labeled 'Bass' and contains guitar tablature. It starts with a 'TAB' label on the left. The notes are represented by numbers on a five-line staff: 5, 5 with a dot above it, 7, 4, 7, 4, 7, and 5. The first two notes (5 and 5<sup>•</sup>) are connected by a slur, and the last two notes (4 and 7) are also connected by a slur.

