

# Harmonisch Moll System

A-harmonisch-moll 1.Stufe Amj7

1 2 b3 4 5 b6 j7 8

A musical staff in treble clef with a key signature of one flat (B-flat) and a time signature of 8/8. It contains eight eighth notes: A2, B2, B-flat3, C4, D4, E4, F-sharp4, and G4. The notes are labeled with numbers 1 through 8 below them.

B-lokrisch.13 2.Stufe Bm7b5

1 b2 b3 4 b5 6 7 8

A musical staff in treble clef with a key signature of two flats (B-flat and E-flat) and a time signature of 8/8. It contains eight eighth notes: B2, B-flat2, B-flat3, C4, C-flat4, D4, E4, and D4. The notes are labeled with numbers 1 through 8 below them.

C-ionisch.#5 3.Stufe Cj7#5

1 2 3 4 #5 6 j7 8

A musical staff in treble clef with a key signature of one sharp (F-sharp) and a time signature of 8/8. It contains eight eighth notes: C3, D3, E3, F3, F-sharp3, G3, A3, and G3. The notes are labeled with numbers 1 through 8 below them.

D-dorisch#11 4.Stufe Dm7

1 2 b3 #4 5 6 7 8

A musical staff in treble clef with a key signature of two sharps (F-sharp and C-sharp) and a time signature of 8/8. It contains eight eighth notes: D3, E3, F3, F-sharp3, G3, A3, B3, and A3. The notes are labeled with numbers 1 through 8 below them.

E-phrygisch.Dur 5.Stufe E7

1 b2 3 4 5 b6 7 8

A musical staff in treble clef with a key signature of one sharp (F-sharp) and a time signature of 8/8. It contains eight eighth notes: E3, F3, F-sharp3, G3, A3, B3, B-flat3, and A3. The notes are labeled with numbers 1 through 8 below them.

F-lydisch#9 6.Stufe Fj7

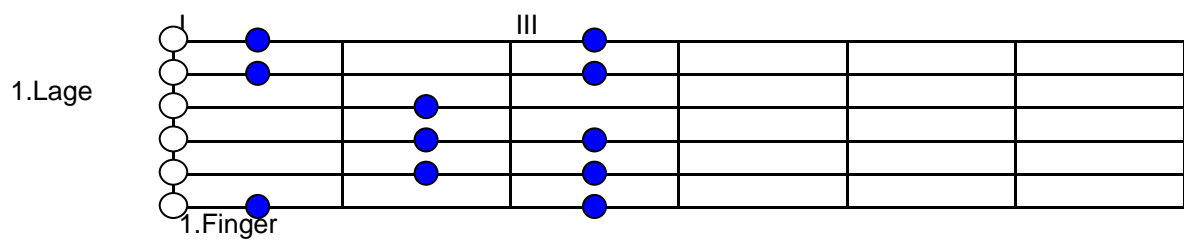
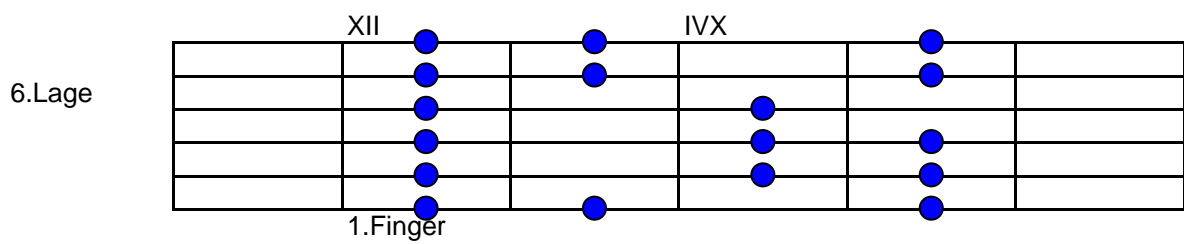
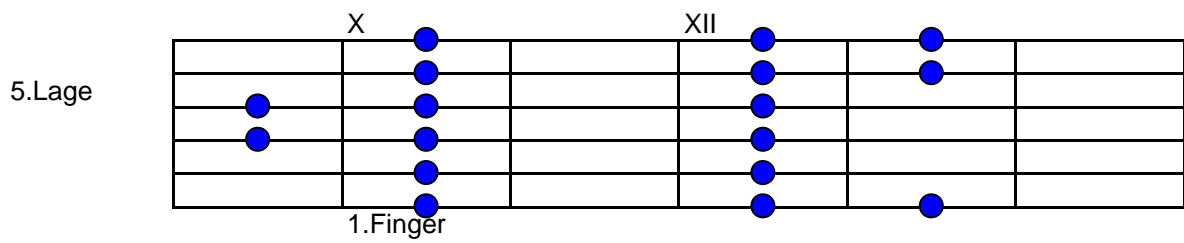
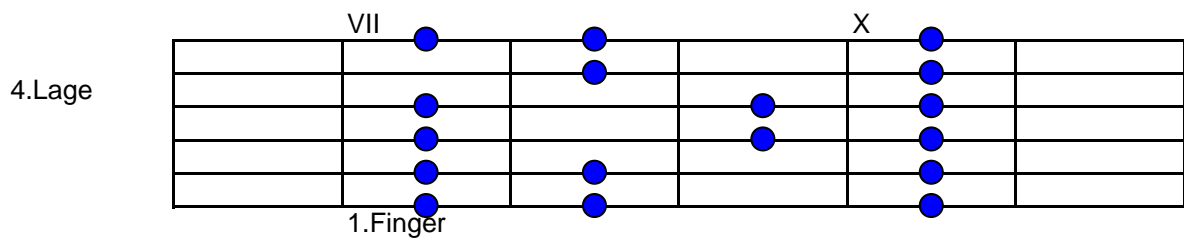
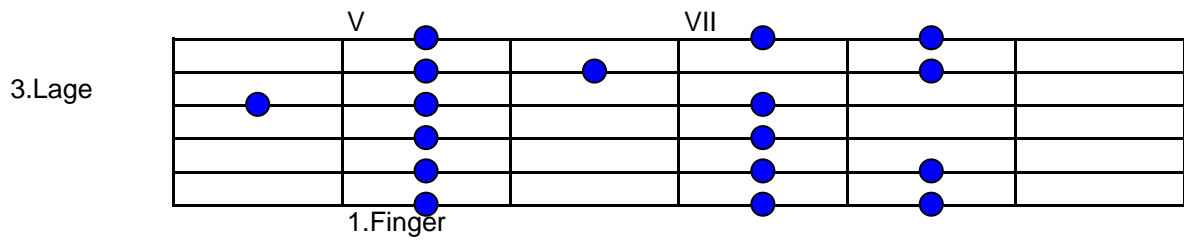
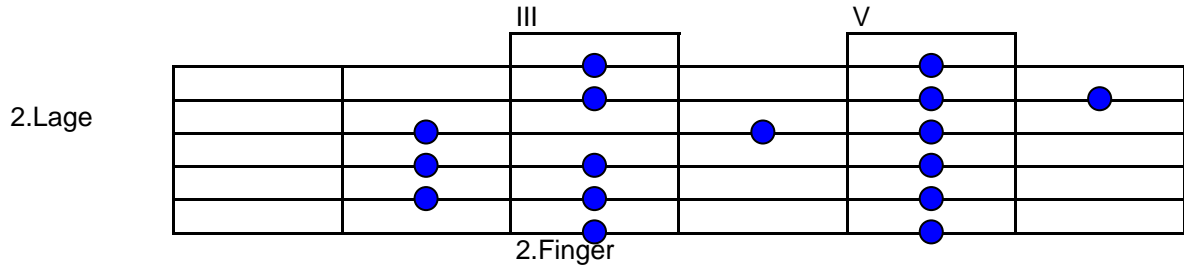
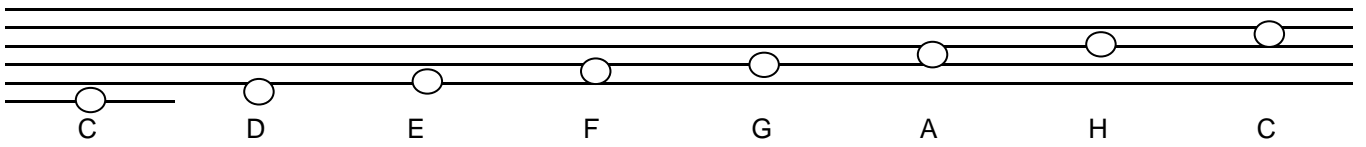
1 #2 3 #4 5 6 j7 8

A musical staff in treble clef with a key signature of two sharps (F-sharp and C-sharp) and a time signature of 8/8. It contains eight eighth notes: F3, F-sharp3, G3, G-sharp3, A3, B3, C4, and B3. The notes are labeled with numbers 1 through 8 below them.

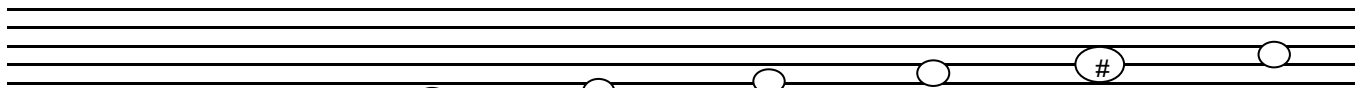
G#-harm.vermindert 7.Stufe G#°

1 b2 b3 b4 b5 b6 b7 8

A musical staff in treble clef with a key signature of two sharps (F-sharp and C-sharp) and a time signature of 8/8. It contains eight eighth notes: G-sharp3, A3, B3, C4, D4, E4, F4, and G-sharp4. The notes are labeled with numbers 1 through 8 below them.



C Dur Tonleiter, 6 Lagen



1.Lage

I III

1.Finger

3.Lage

IV VII

1.Finger

4. Lage

VII X

1.Finger

2.Lage

I III V

3.Finger

5.Lage

IX X XII

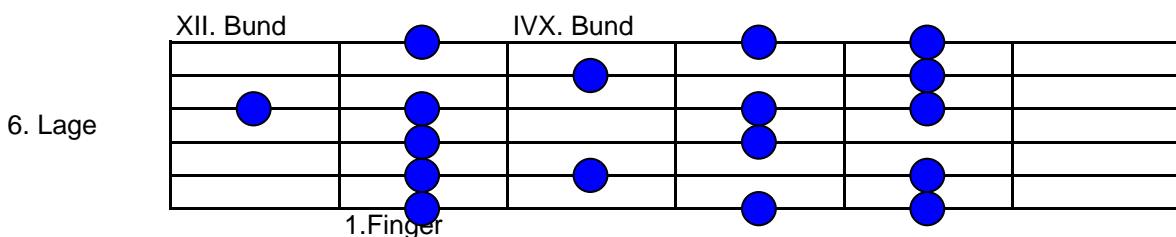
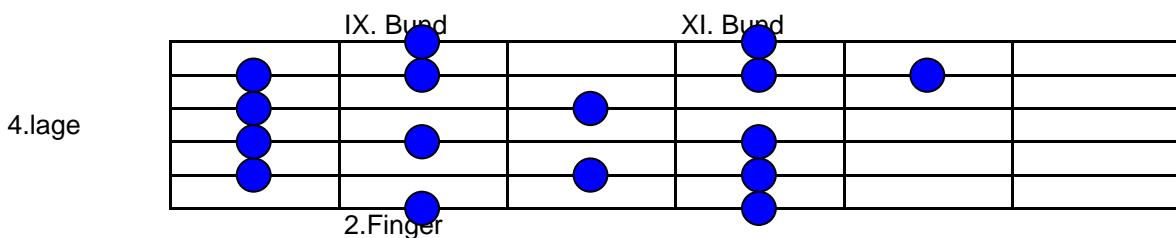
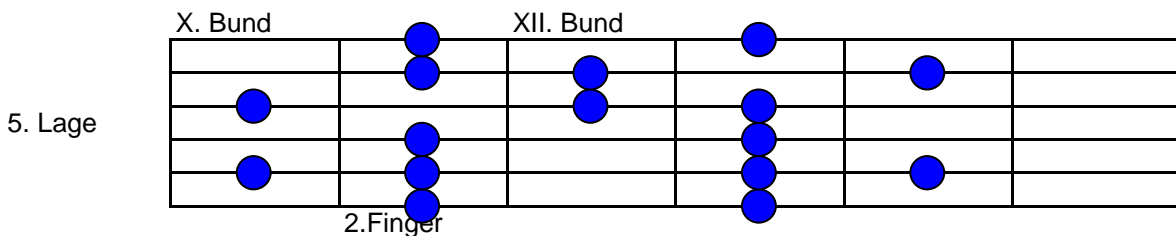
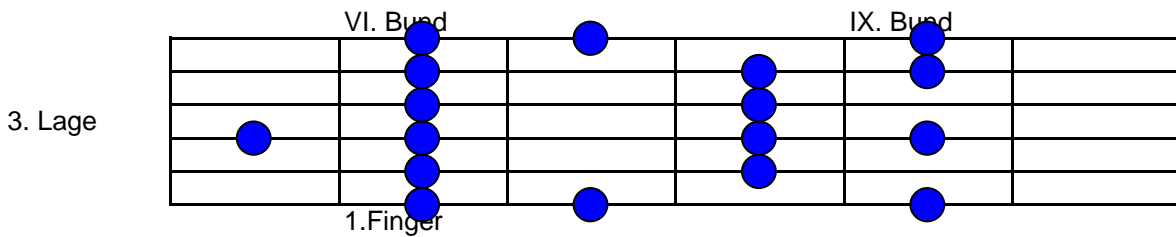
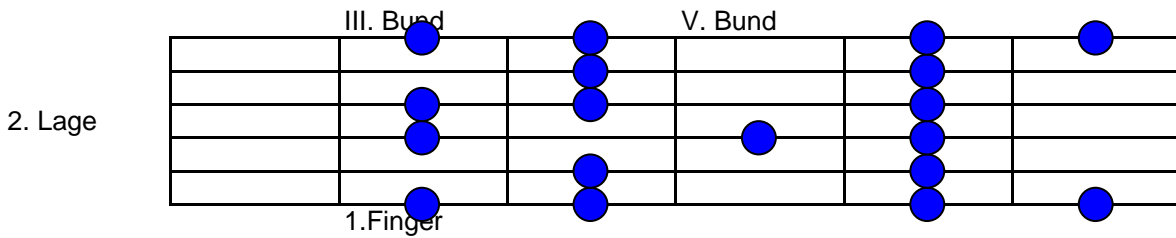
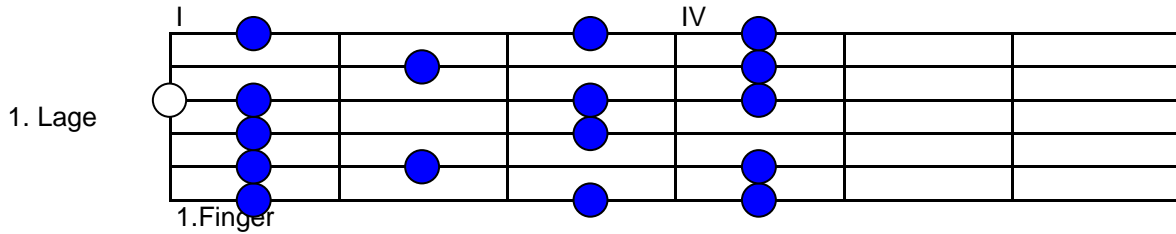
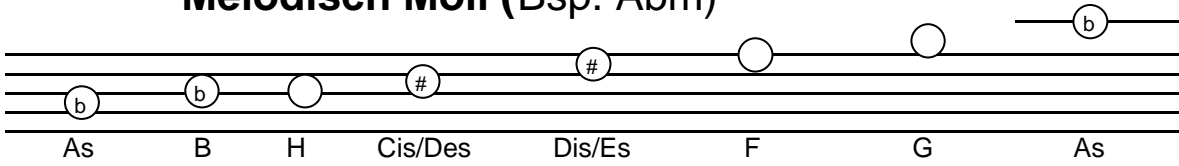
6.Lage

XI XII XV

2.Finger

Am Harmonisch = Amj7, Hm7b5, Cj7#5, Dm7, E7b9, Fj7, G#o

# Melodisch Moll (Bsp. Abm)



Ab Melodisch : Abmj7, Bbm7, Hj7#5, C#7, D#7, Fm7b5, Gm7b5/G7alt.

# 3 Haupt Scalen

Stufen      Ionisch Dur      Melodisch moll      Harmonisch moll

I	Ionisch	Aeolisch 6 j7	Harm. Moll
II	Dorisch	Dorisch b9	Lokrisch 13
III	Phrygisch	Lydisch #5	Ionisch #5
IV	Lydisch	Mixo #11	Dorisch # 11
V	Mixolydisch	Mixo b13	Phrygisch Dur
VI	Aeolisch	Aeolisch b5	Lydisch # 9
VII	Lokrisch	Alteriert	Harm. Verm.

# Ionisches System - C Dur Tonleiter und deren Stufen

C - ionisch, 1. Stufe Cj7 Tonika (T)

Musical notation for the C Ionian scale (1st mode) in C major. The scale is shown on a treble clef staff with a common time signature. The notes are C, D, E, F, G, A, B, C. The notes are grouped into two measures of four notes each. Below the staff, the notes are numbered 1 through 8, with chord symbols: 1, 2/9, 3, 4/11, 5, 6/13, j7, 8.

D - dorisch, 2. Stufe Dm7 Subdominantparallele (Sp)

Musical notation for the D Dorian scale (2nd mode) in C major. The scale is shown on a treble clef staff with a common time signature. The notes are D, E, F, G, A, B, C, D. The notes are grouped into two measures of four notes each. Below the staff, the notes are numbered 1 through 8, with chord symbols: 1, 2/9, b3, 4/11, 5, 6/13, 7, 8.

E - phrygisch, 3. Stufe Em7 Dominantparallele (DP)

Musical notation for the E Phrygian scale (3rd mode) in C major. The scale is shown on a treble clef staff with a common time signature. The notes are E, F, G, A, B, C, D, E. The notes are grouped into two measures of four notes each. Below the staff, the notes are numbered 1 through 8, with chord symbols: 1, b2/b9, b3, 4/11, 5, b6/b13, 7, 8.

F - lydisch, 4. Stufe Fj7 Subdominante (S)

Musical notation for the F Lydian scale (4th mode) in C major. The scale is shown on a treble clef staff with a common time signature. The notes are F, G, A, B, C, D, E, F. The notes are grouped into two measures of four notes each. Below the staff, the notes are numbered 1 through 8, with chord symbols: 1, 2/9, 3, #4/#11, 5, 6/13, j7, 8.

G - mixolydisch, 5. Stufe G7 Dominante (D)

Musical notation for the G Mixolydian scale (5th mode) in C major. The scale is shown on a treble clef staff with a common time signature. The notes are G, A, B, C, D, E, F, G. The notes are grouped into two measures of four notes each. Below the staff, the notes are numbered 1 through 8, with chord symbols: 1, 2/9, 3, 4/11, 5, 6/13, 7, 8.

A - äolisch, 6. Stufe Am7 Tonikaparallele (Tp)

Musical notation for the A Aeolian scale (6th mode) in C major. The scale is shown on a treble clef staff with a common time signature. The notes are A, B, C, D, E, F, G, A. The notes are grouped into two measures of four notes each. Below the staff, the notes are numbered 1 through 8, with chord symbols: 1, 2/9, b3, 4/11, 5, b6/b13, 7, 8.

H - lokrisch, 7. Stufe Hm7b5 (halbvermindert)

Musical notation for the H Locrian scale (7th mode) in C major. The scale is shown on a treble clef staff with a common time signature. The notes are H, A, B, C, D, E, F, H. The notes are grouped into two measures of four notes each. Below the staff, the notes are numbered 1 through 8, with chord symbols: 1, b2/b9, b3, 4, b5, b6/b13, 7, 8.

# Scales

[Composer]

Guitar

I ionisch (C Dur) Cj7/9/11/13 II dorisch (B Dur) Cm7/9/11/13

III phrygisch (As Dur) Cm7/b9/11/b13 IV lydisch (G Dur) Cj7/9/#11/13

V mixolydisch (F Dur) C7/9/11/13 VI äolisch (Es Dur) Cm7/9/11/b13

VII locrisch (Db Dur) Cm7b5/b9/11/b13 I äolisch 6 j7 (CMM) Cmj7/9/11/13

II dorisch b9 (BMM) Cm7/b9/11/13 III lydisch #5 (AMM) Cj7#5/9/#11/13

IV mixo#11 (GMM) C7/9/#11/13 V mixo b13 (FMM) C7/9/11/b13

VI äolisch b5 (EbMM) Cm7b5/9/11/b13 VII alteriert (DbMM)

28 Calt. I harmonisch Moll (CHM) Cmj7/9/11/b13

Fingering sequences for each scale: 1 2 3 4 5 6 j7 8; 1 2 b3 4 5 6 7 8; 1 b9 b3 4 5 b13 7 8; 1 2 3 #11 5 6 j7 8; 1 2 3 4 5 6 7 8; 1 2 b3 4 5 b13 7 8; 1 b2 b3 4 b5 b6 7 8; 1 2 b3 4 5 6 j7 8; 1 b9 b3 4 5 6 7 8; 1 2 3 #11 #5 6 j7 8; 1 2 3 #11 5 6 7 8; 1 2 3 4 5 b13 7 8; 1 2 b3 4 b5 b6 7 8; 1 #b2 b3 b4 b5 b6 7 8; 1 2 b3 4 5 b6 j7 8

31 II Lokrisch13 (BHM) Cm7b5/b9/11/13 III ionisch#5 (AHM)

1 b2 b3 4 b5 6 7 8 1 2 3 4 #5 6 j7 8

34 Cj7#5/9/11/13 IV dorisch#11 (GHM) Cm7/9/#11/13

1 2 b3 #4 5 6 7 8 1 b2 3 4 5 b6 7 8 1 #2 3 #4 5 6 j7 8

37 V phrygisch Dur (FHM) C7/b9/11/b13 VI lydisch #9 (EHM) Cj7/#9/#11/13

1 b2 3 4 5 b6 7 8 1 #2 3 #4 5 6 j7 8

41 VII harmonisch vermindert (DbHM/C#HM) Co

1 b2 b3 b4 b5 b6 b7 8