

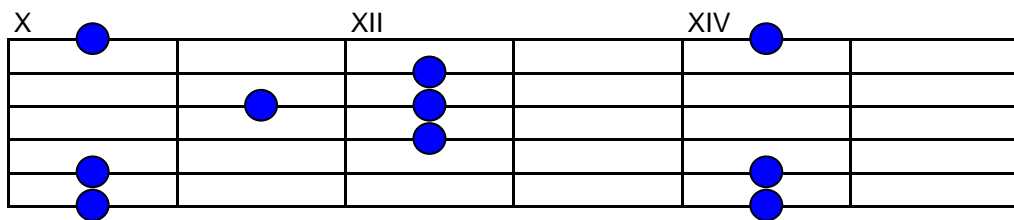
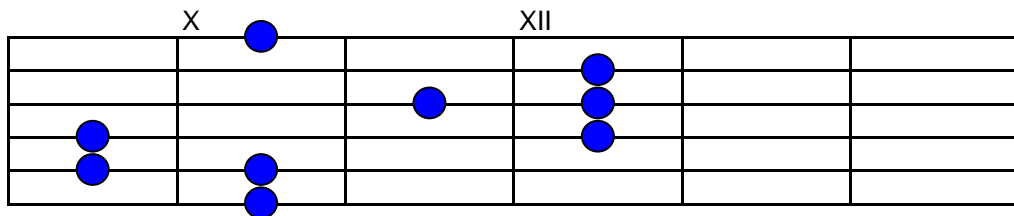
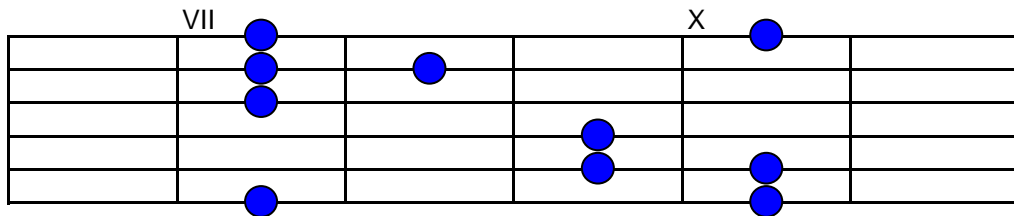
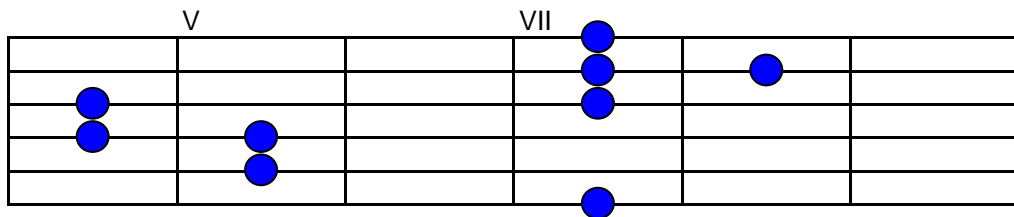
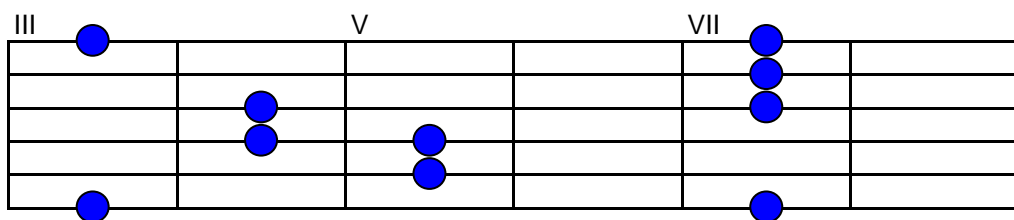
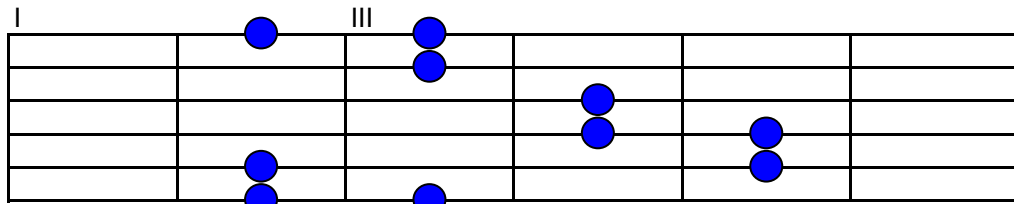
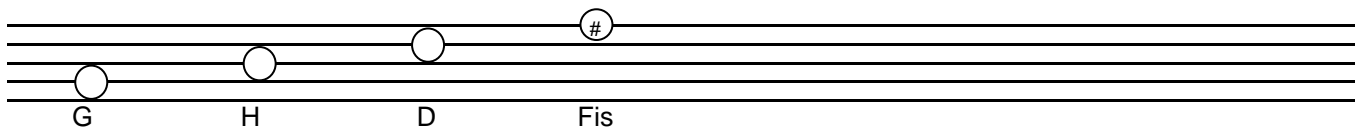
# improvisieren mit Akkordtönen

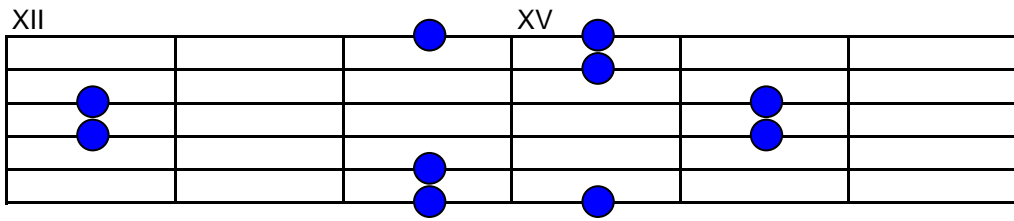
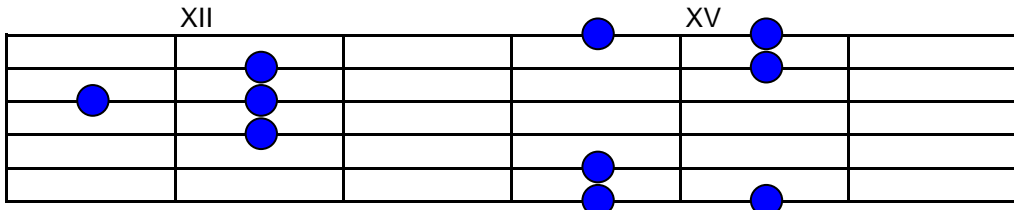
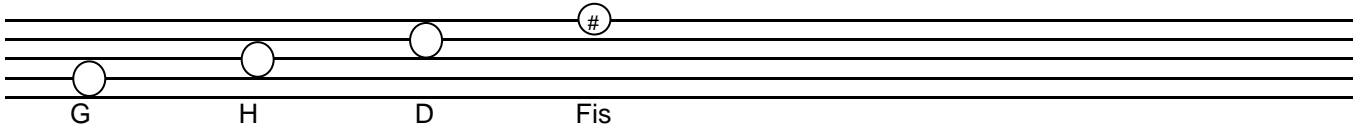
Gitarre

The image shows two staves of musical notation for guitar. The first staff is labeled 'Gitarre' and contains a sequence of notes in a 4/4 time signature. Above the staff, three chords are indicated: Eb7, Cm7, and Fm7. The notes in the first staff are: Eb4, Fb4, Gb4, Ab4, Bb4, C5, Eb4, Fb4, Gb4, Ab4, Bb4, C5, Eb4, Fb4, Gb4, Ab4, Bb4, C5. The second staff starts at measure 4 and contains a sequence of notes: Bb4, C5, Eb4, Fb4, Gb4, Ab4, Bb4, C5. The key signature has three flats (Bb, Eb, Ab).

Zur improvisation mit Akkordtönen :  
verwendet ausschließlich die Töne - die in den Akkorden vorkommen und  
versucht Melodien zu improvisieren

# Gj7 Akkordtöne





# AKKORDTOENE / IMPROVISATION

Gitarre

The image shows a musical staff for guitar in G major, 4/4 time. Above the staff, the following chord symbols are written: G7, Bm7, Em7-9, Am7, D, D7, G, C7. The staff contains a sequence of notes: G4 (quarter), B4 (quarter), D5 (quarter), E5 (quarter), F#5 (quarter), G5 (quarter), A5 (quarter), B5 (quarter), C6 (quarter), D6 (quarter), E6 (quarter), F#6 (quarter), G6 (quarter), A6 (quarter), B6 (quarter), C7 (quarter). The notes are all quarter notes, and the staff ends with a double bar line.

HIER EIN BEISPIEL WIE IHR MIT AKKORDTOENEN IMPROVISIEREN KOENNT,  
SPIELT ZUR IMPROVISATION AUSSCHLIESSLICH DIE AKKORDEIGENEN TOENE